



**Buckinghamshire**  
County Council



***Buckinghamshire Health and Care System***

# **Sustainability & Transformation Plan - briefing**

**Lou Patten**  
**Chief Officer, Aylesbury Vale CCG**

**Health and Adult Social Care Select Committee**  
**10<sup>th</sup> May 2016**



**Buckinghamshire**  
County Council



***Buckinghamshire Health and Care System***

## **Presentation content**

- **Background and national policy context to the STP process**
- **STP footprint and approach**
- **Programme governance**
- **Resource assumptions**
- **Timescale to first draft**



Buckinghamshire  
County Council



***Buckinghamshire Health and Care System***

## **NHS Shared Planning Guidance 2016-17**

- **Every health & care system is to co-create an ambitious local blueprint to accelerate implementation of the *Five Year Forward View* – Sustainability and Transformation Plans (STPs)**
- **Plans should:**
  - **be place-based and multi-year built around population needs**
  - **help ensure that the investment secured in the *Spending Review* does not (just) prop up individual organisations**
  - **drive a sustainable transformation in patient experience & health outcomes**
  - **build & strengthen local relationships with a shared understanding of challenges & scale of ambition**



**Buckinghamshire**  
County Council



***Buckinghamshire Health and Care System***

## **Sustainability and Transformation Plans (STPs)**

- **44 STP ‘footprints’ have been defined across England largely based on patient flows into tertiary acute centres**
- **STPs must address strategic issues that transcend more than one local system e.g. Thames Valley Urgent & Emergency Care Network**
- **Each ‘footprint’ has a named ‘system leader’ to drive development of plans – David Smith, Chief Executive, Oxfordshire Clinical Commissioning Group**
- **Buckinghamshire is part of a Buckinghamshire, Oxfordshire, Berkshire West ‘footprint’**



Buckinghamshire  
County Council



*Buckinghamshire Health and Care System*

## Buckinghamshire, Oxfordshire, Berkshire West 'footprint'



1.8m population

£2.5bn place based allocation

7 Clinical Commissioning Groups

16 Foundation Trust & NHS Trust providers

14 Local authorities

The overall approach is based on developing STP plans in local systems where it makes sense with key partners e.g. for integrated health & care, and collaborating across the STP footprint as necessary on cross system issues e.g. for urgent & emergency acute care

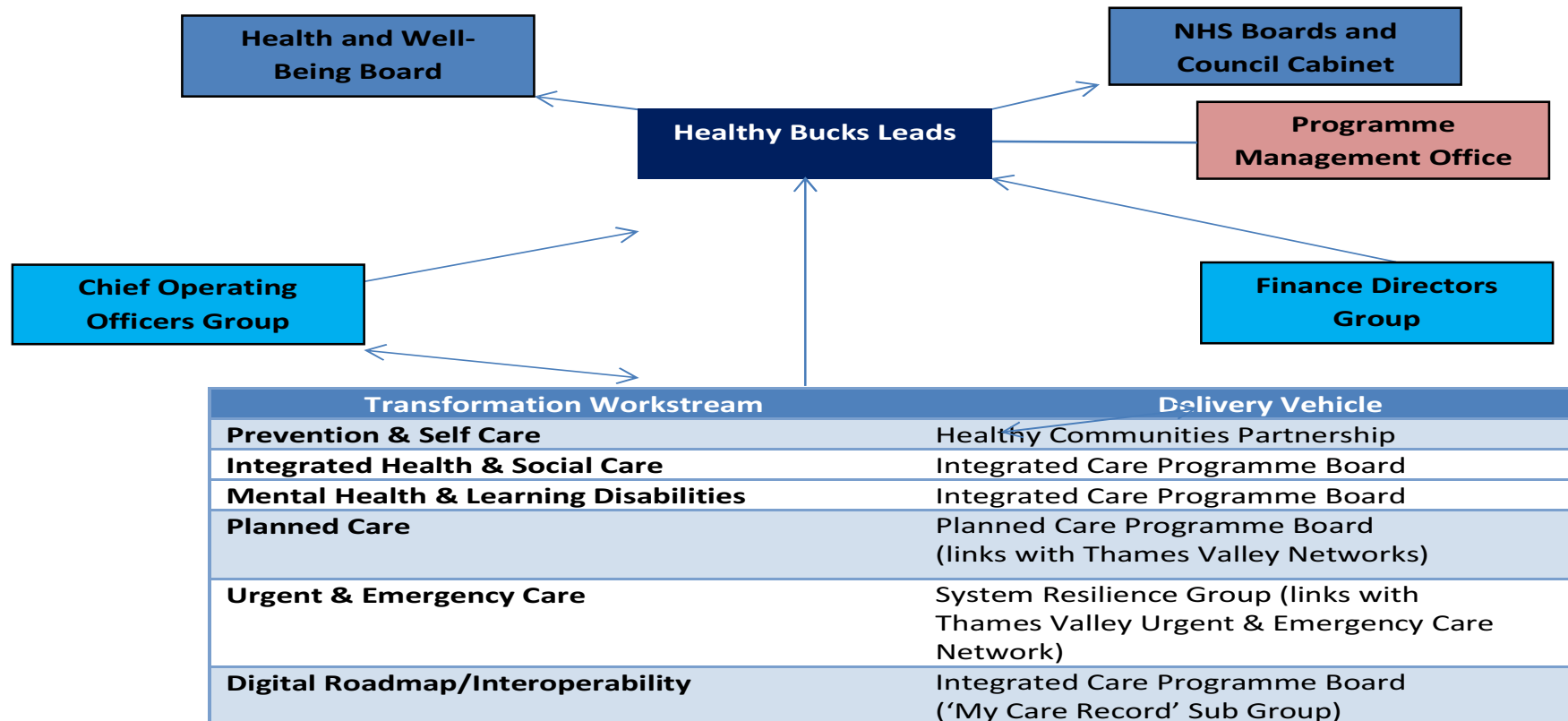


## Buckinghamshire Health and Care System

# Buckinghamshire STP Governance Structure

The Buckinghamshire chapter of the STP is being driven by the  
*Healthy Bucks Leadership Group*

**Figure 1 Governance Structure for HBL delivery of the STP**





Buckinghamshire  
County Council



*Buckinghamshire Health and Care System*

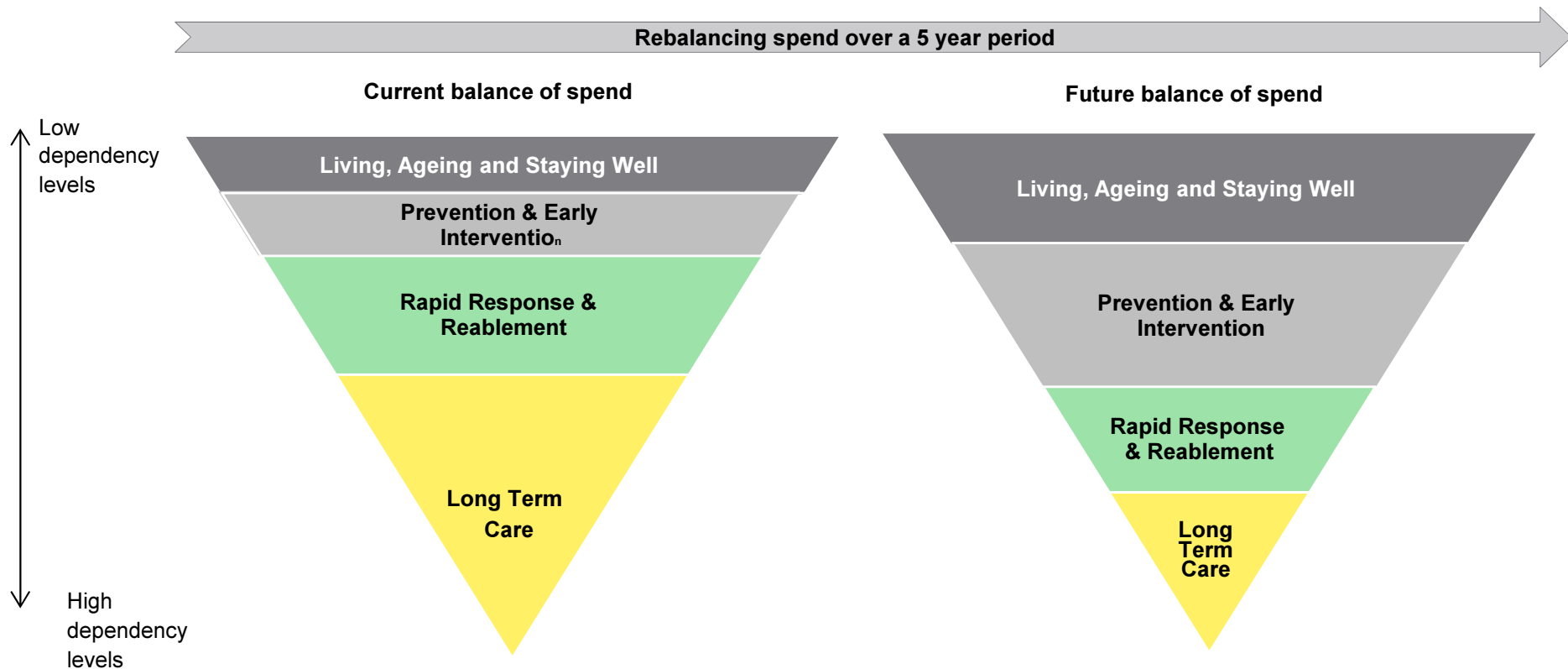
## Resource assumptions

- **STPs will be the single application & approval process for 'growth' funding for 2017/18 onwards**
- **2016/17 resources largely already allocated**
- **Buckinghamshire notional fair share of resources in the region of £30 million on a weighted capitation basis**
- **Must be linked to delivering new models of care e.g. *Vanguard* models such as Multi Specialty Community Providers, Primary & Acute Care Systems**



## Buckinghamshire Financial Challenge

- Low risk relative to elsewhere in the NHS in England but over £185m across the health & care system
- Focus is to reduce spend on bed-based care into prevention & care at home









Buckinghamshire  
County Council



***Buckinghamshire Health and Care System***

## Next Steps

- ***Healthy Bucks Leadership Group strategic session 16<sup>th</sup> May 2016***
- **Alignment of other relevant and critical workstreams into the STP programme structure e.g. estates, workforce**
- **Begin to refine planning assumptions**
- **Set the parameters for modelling different service changes in the local system**
- **Consider options for delivering *Vanguard* models relevant to Buckinghamshire**
- **Agree communications & engagement plan approach**